

PUBLIC SAFETY

DISPATCH MERGER



PUBLIC SAFETY

DISPATCHER



DISPATCH CAPABILITIES

- Call takers receive a call and will have the address automatically from the 911 system. The GPS information is loaded directly from the caller to the 911 system. They validate address in the computer and the computer automatically recognizes the closest unit utilizing GPS.
- Dispatchers will see the response units directly on a GPS map. The ability to see all responding units will cut down in intersection accidents between responding units as well as the enhanced ability to get the closest unit to the emergency rapidly.
- The incident gets transferred to the appropriate dispatcher via the CAD system. And the dispatcher can update information immediately. This information is sent directly to the emergency unit.
- All emergency units that are available are taken into consideration for dispatch. This includes units in police that are not assigned to patrol. Example, a detective that is not assigned to an incident and is currently available will be assigned to a high priority call when no patrol unit is available.
- The CAD system will import prior loaded violations, I'm safe structures, hazardous materials stored, open code violations and property information such as owner information and telephone numbers.

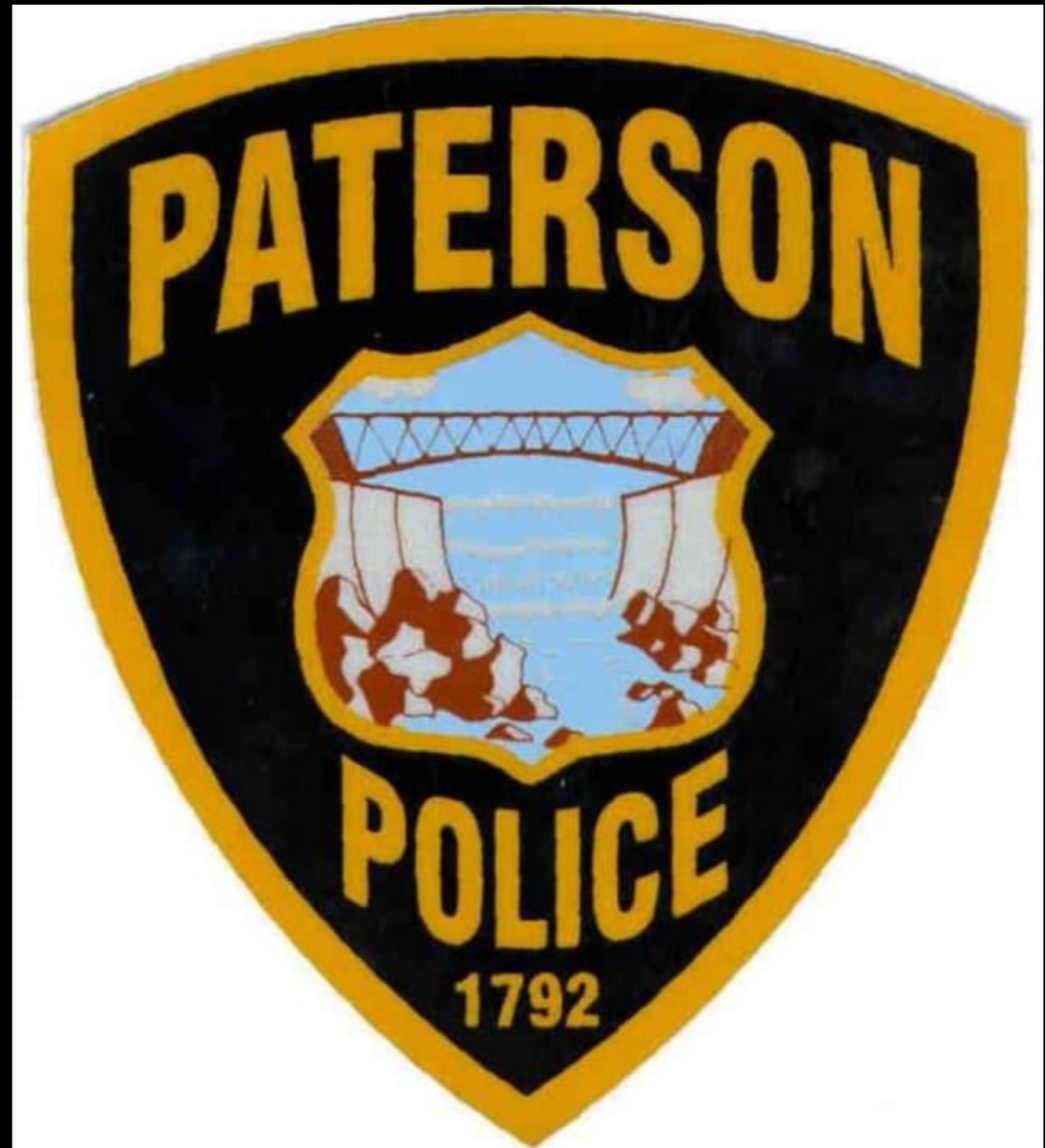
DISPATCH COMPONENTS

- 911 system
- CAD system
- Desktop work stations
- Headsets
- Servers and computer hardware



POLICE DEPARTMENT

- Closest unit receives the call on the computer screen mounted in car or initiates a call on that computer.
- Officer acknowledges on screen and receives updates and address history.
- They do full report in real time right in vehicle.
- Officers look up vehicle and person information in the vehicle as well.



POLICE DEPARTMENT COMPONENTS

- Records management program for report writing and statistics.
- Mounted computer in car.
- Modem in car.
- E-ticket printer in car.
- License scanner in car
- Camera and label printer for booking and evidence.
- Desktop labs for records management.



FIRE DEPARTMENT

- iPads Will be utilized and fire trucks, ambulances, and SUVs.
- This gives the ability to receive and acknowledge dispatch notifications for emergency use.
- iPads also give the ability to do in-service inspections in real time.
- The station monitor will show the address of the emergency that the dispatcher type into the CAD. Thus more rapidly deploying units.
- Hydrants that we expect twice per year will be preloaded on a map with in the CAD system.



FIRE DEPARTMENT COMPONENTS

- iPad Air 2
- Station monitors
- Signature pad
- Camera



NEW TABLE OF ORGANIZATION

- Director of Public Safety
 - Police Division
 - Fire Division
 - OEM Coordinator
 - 2 Clerks
 - PD & FD Deputy Coordinators
 - Communications
 - Emergency Management



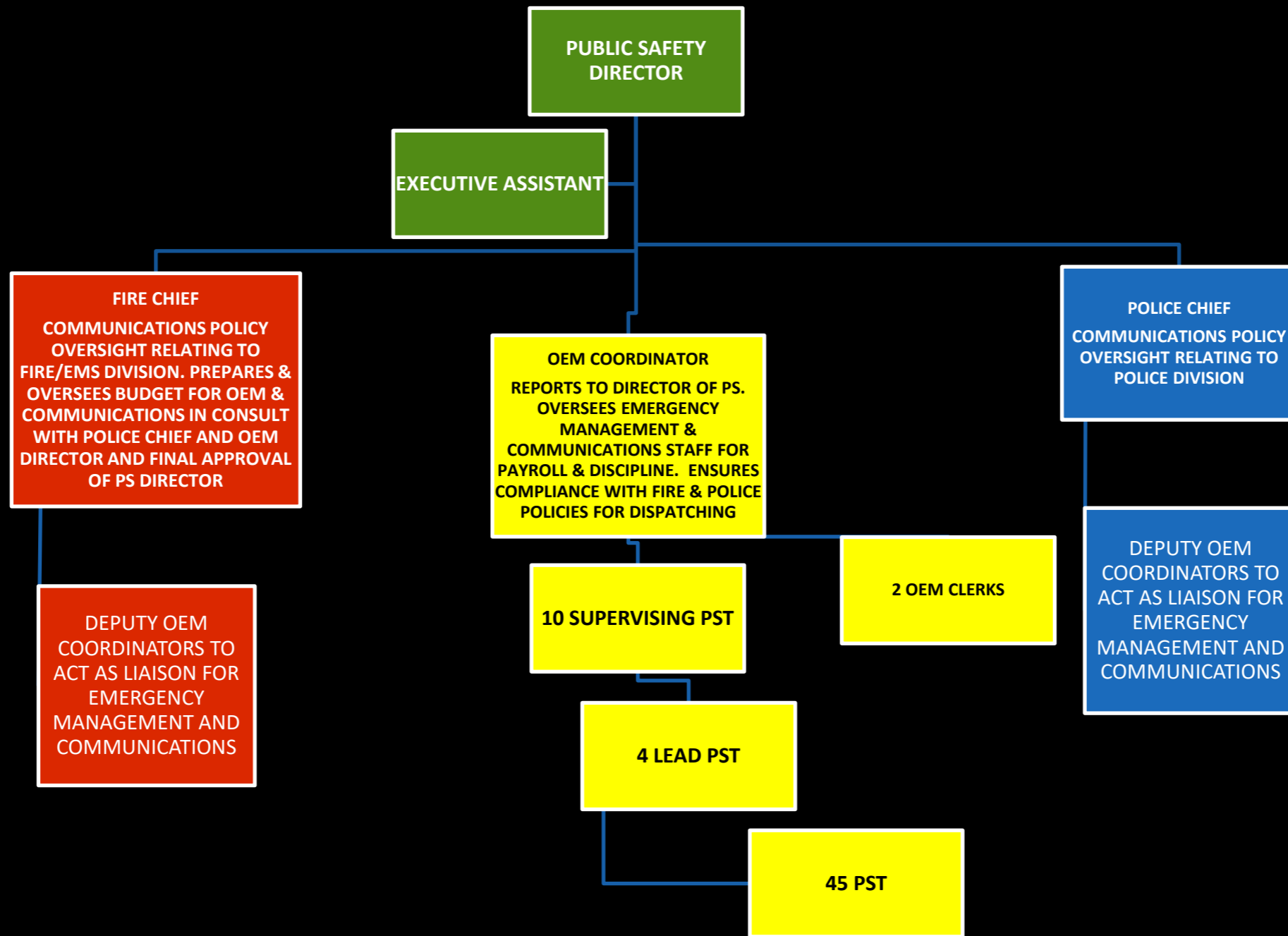
ORDINANCE 5-73. DEPARTMENT ESTABLISHED; PUBLIC SAFETY DIRECTOR AS HEAD

- Ordinance completed to reflect the new Table of Organization, including:
 - 1 Public Safety Director
 - Place oversight of Communications directly within the Fire Division under the OEM Coordinator

STAFFING REQUIREMENTS

- 1 OEM Coordinator (Statutory and is already budgeted through OEM)
 - 2 Clerks (already budgeted through OEM)
- 10 Supervising Public Safety Telecommunicators
 - 1 assigned to Staff as Executive Officer
- 4 Lead Public Safety Telecommunicators
 - 1 assigned to Staff as Training Manager
- 45 Public Safety Telecommunicators

FLOW CHART:



COST

- SUGGESTED LINE ITEM= 8-01-00-9060-1000 TO 2999. THIS IS THE OEM BUDGET. TRANSFER STAFF IN THE 1000'S AND O&E IN THE 2000'S FROM POLICE, FIRE & DPW BUDGETS.
- NO NEW COST FOR DIRECTOR
- THE INITIAL PLAN CONSISTED OF ADDING A NEW CHIEF OF COMMUNICATIONS.
 - WITH THE ADJUSTMENT, WE ARE UTILIZING \$167,000 OF ALREADY EXISTING STATUTORY OEM S&W TO BETTER UTILIZE CURRENT BUDGETED POSITIONS.
 - THIS CUTS APPROXIMATELY \$100K EXPECTED SALARY FOR A COMMUNICATIONS CHIEF.
- PD & FD STAFF WOULD NO LONGER BE NEEDED AROUND THE CLOCK WITH EXCEPTION OF LIAISONS FROM EACH DURING DAYTIME HOURS.
 - POLICE FOR CJIS COMPLIANCE & POLICY DEVELOPMENT OR FOR SPECIAL OPERATIONS OR EMERGENCY DECLARATIONS.
 - FIRE FOR MUTUAL AID AND POLICY COMPLIANCE OR FOR MULTI-ALARM FIRES AND EMERGENCY DECLARATIONS.
 - *NOTE: THE TOTAL SEEN HERE IS BASED ON CURRENT SALARY GUIDES AND MUST BE ADJUSTED TO FIT THE NEW SALARY GUIDES. WITH THE REDUCED COST OF PD IN DISPATCH, A SAVINGS WILL BE VISIBLE AND MORE OFFICERS CAN BE ASSIGNED TO POLICING.*

POLICE (Civilian)	\$ 2,370,934.15
POLICE (Officers)	\$ 2,166,781.10
FIRE	\$ 805,376.79
DPW	\$ 207,037.13
TOTAL	\$ 5,550,129.17
TOATAL W/O OFFICERS	\$ 3,383,348.07
PROJECTED W/ RAISE	\$ 3,633,348.07
NET REDUCTION	\$ 1,516,781.10
FINAL GROSS	\$ 4,033,348.07

OPERATING BUDGET

- MERGE EVERYTHING INTO 8-01-00-9060-2000 TO 2999
- THINGS TO CONSIDER NOW:
 - Merge Line Item Budgets from PD, Fire & DPW to OEM 9060 Account. This should be only the portion of their line items that support their dispatching centers.
 - MERGE ALL CONTRACTS INTO 1.
 - EX. PROPHOENIX & 911 SYSTEM ANNUAL MAINTENANCE WILL COME THROUGH THIS BUDGET.
 - ALL COMPUTER HARDWARE WITHIN THE COMMUNICATIONS CENTER WILL COME THROUGH THIS BUDGET.
 - LANDLINE PHONES ASSOCIATED WITH COMMUNICATIONS THROUGH 9060.
 - ALL COMMUNICATIONS FURNITURE (CHAIRS & DESKS) WILL COME THROUGH THIS BUDGET.